

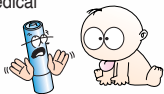
## Contents

<b>Safety Precaution</b> .....	4
<b>Product Features</b> .....	6
<b>Package Contents</b> .....	7
In the package.....	7
Name of each part.....	8
Replacing the battery .....	9
Connecting To A PC .....	10
Installing EMX-830 Software .....	11
Using USB.....	15
Removing EMX-830 from a PC.....	17
Using Windows Media Player .....	17
Downloading lyrics .....	22
To search for the downloadable lyrics.....	25
Lyric Editor .....	26
To format EMX-830 .....	29

<b>Using EMX-830</b> .....	30
Preparations.....	30
LCD Window .....	31
Button Operation .....	34
Basic Operation.....	37
To play music .....	39
To change to VOICE Mode .....	42
To change to FM Mode .....	44
To change to Line-In Mode .....	48
To configure Menu .....	49
<b>Firmware Upgrade</b> .....	61
<b>Product Specification</b> .....	64
<b>Troubleshooting Checklist</b> .....	65
<b>Cautions</b> .....	66

## Safety Precaution

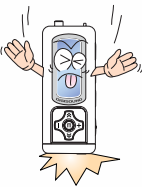
- Keep any unused battery away from the children's reach because it may pose choking hazard. Call for an immediate medical assistance when an unwanted incident happened.



- Do not disassemble, place pressure to, short-circuit batteries or set them on fire. They may cause leak, heat, explosion or fire hazard.



- Do not drop or impact the unit. It may cause malfunctions.



- Do not place the unit close to cash cards and other cards with magnetic strips. The unit can damage those cards.



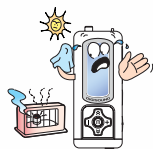
- Do not press too hard on the transparent plastic cover of the LCD window. Pressing too hard may break the covering.



- Do not press too hard on the keypad.



- Avoid direct exposure to the sunlight. Avoid placing near heat sources or very hot places.



- Use soft fabrics to clean the unit. Do not use solvent, benzyl, or paint thinner.



- Listening too long at a loud volume can cause serious hearing problems. Doctors warn of the hearing hazard. When you notice problem in your ears, keep the volume down or do not use the product.



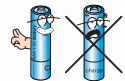
- Do not touch the leak from the LCD window. It may cause skin irritation. When the leak gets in your eyes or you have a skin contact with the leak, consult your doctor immediately.



- Refrain from using the earphone when you are biking or driving or walking (especially when crossing the street.) They pose safety hazards and in some areas are illegal.



- Be sure to use an Alkaline battery (1.5V, LR03, AAA size or AM4.) If batteries or rechargers the company recommends are not used, it may cause the leak, malfunction or unusual static noise that may cause hearing problems.



## Product Features

1. Lyrics Download(LDB)
2. Lyrics Editing
3. USB2.0
4. SRS WOW
5. Automatic Folder Search
6. Playback Settings
7. FM Auto Scan
8. Seven-color Backlight
9. Lyric Display and ID3 Tag Support
10. Windows Media Player Plugin Support
11. All Frequency Band Support for MP3/WMA
12. Sleep, Repeat Section
13. User EQ
14. Menu in English and other multiple languages
15. Firmware Upgarde

For more product information, visit our website below;  
 Homepages: <http://www.mscomp3.com>

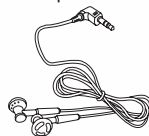
## Package Contents

### In the package

EMX-830 Series Body



Necklace-type Earphone



Installation CD



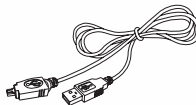
Necklace-type Strap



Manual



USB Cable



One Type AAA Battery



### OPTION

Carrying Case



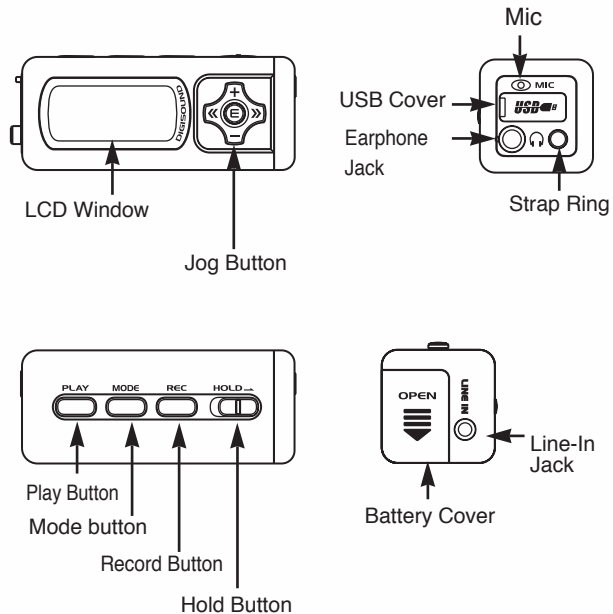
Armband



USBConnector



## ■ Name of Each Part



## ■ Replacing the Battery

- 1 Pull open the battery cover of EMX-830



- 2 Check if + and - poles of the battery are positioned correctly when replacing the battery.



## ■ Connecting to a PC

- Minimum PC requirements
- Pentium 133MHz or better
- Windows 98SE/ME/2000/XP
- 20MB or more storage space
- A CD-Rom drive
- A USB port

Tip : \_\_\_\_\_

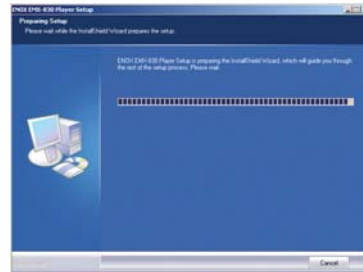
- For the Windows 98SE users, install the provided software for a USB connection.
- When USB is not working for any of Windows 98SE/ME/2000/XP systems, try to fix the problem by updating your Windows.
- Windows Update: Select [Start] -> [Windows Update]

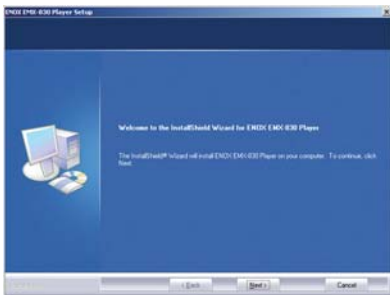
## ■ Installing EMX-830 software

- 1 Insert the installation CD and the following screen appears.

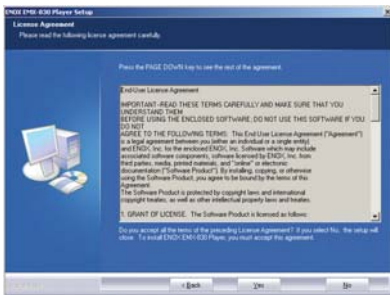


- 2 Select "Setup.Program" to begin the installation.

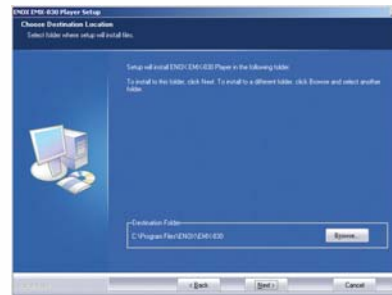




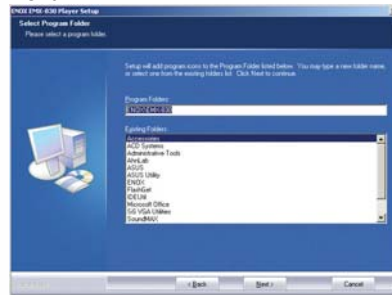
- 3** Press “Next” and the license agreement is displayed.



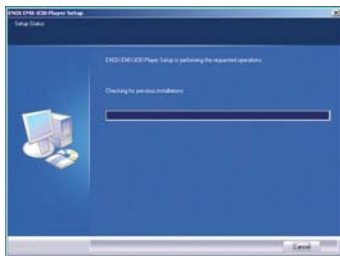
- 4** Choose “Yes” if you agree with the terms of the license.



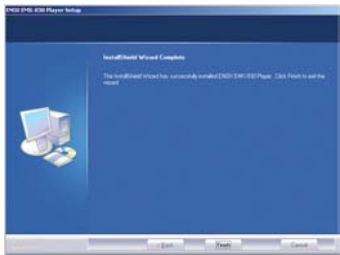
- 5** Choose the location of destination folder for the installation, and click “Next.”



- 6** Click “Next” after you type the name for the installed software.



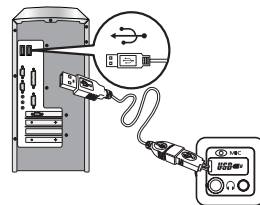
**7** It would take a moment while the installation is progressing.



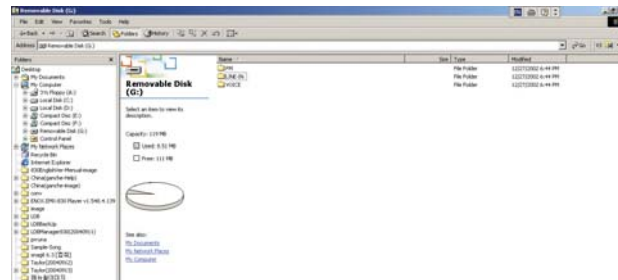
**8** Click on “Confirm” to finish when the installation is complete.

- Tip : \_\_\_\_\_
- Restart your computer when the software installation is for Windows 98SE/ME.

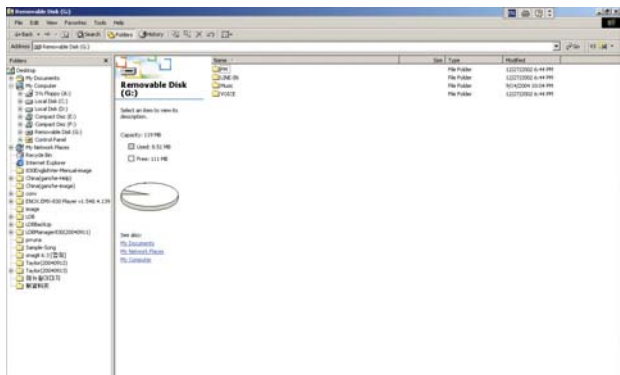
## ■ Using USB



**1** Insert the provided cable end to the USB port after pulling open the cover of the port.



**2** The product works same as a removable disk when connected to a PC.



- ❑ Removable disks operate the same way as floppy drives do. As demonstrated in the picture above, create as many folders as you like to carry music in them and enjoy the product's folder function. Its booting speed will increase when you create "Data" folder and store files other than music files in the data folder.
- ❑ Recorded files from FM, Line-In, and VOICE folders are automatically created by the product's system, and FM, Line-In, and VOICE are stored in each respective folder.

## ■ Removing EMX-830 Series from a PC

### ▷ For users of Windows ME/2000/XP

- To remove the product from a PC, click on "Unplug/eject" icon on the taskbar and wait until a message confirming your action appears.



### ▷ For users of Windows 98SE

- Close all open EMX-830 windows.
- When **USB** blinks on the display, data transfer is in progress.
- Remove the product from your PC after the **USB** blinking stops

## ■ Using Windows Media Player

The product supports Windows Media Player plugins. You can download to and change music formats for EMX-830. (As for the Media Player 9)



### ► To configure options

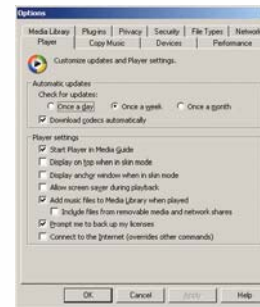
- To edit media information for WMA and MP3, set the Options as described below.



- 1 Activate Media Player of Windows after EMX-830 and a PC link is established.



- 2 Go to Options of the Tools menu.



- 3 Select the Device.



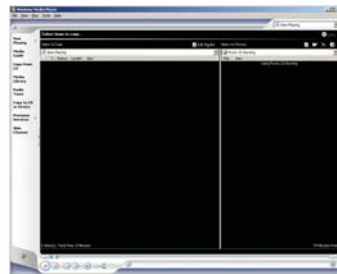
- 4** Select a Removable Disk(EMX-830) and click on the Property button.



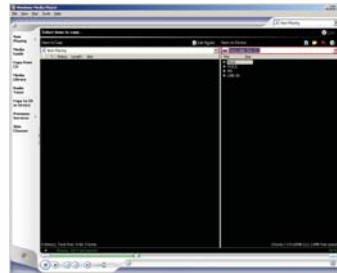
- 5** Move the slide to make a choice of appropriate audio quality, and click on “OK.”

▷ To convert and save music files.

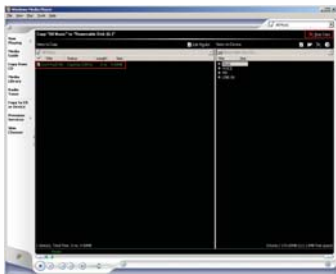
- 1** Link EMX-830 to a PC.



- 2** Choose Copy To CD or Device, and choose EMX-830 Series from the driver pull-down menu on the right pane.



- 3 Make the source files available to Items To Copy and then click on the “Copy” button on the top right to download them to the product.



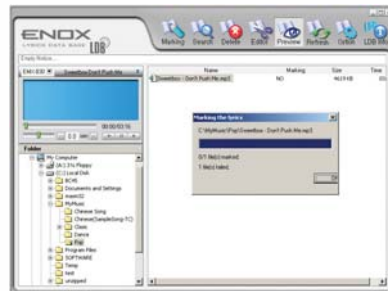
- 4 Disconnect the product from the PC when copying is complete.

### ■ Downloading lyrics.

Downloading Lyrics features of EMX-830 enables users to add lyrics to source tracks. With the help of Lyrics Management software to download from lyrics database, no hassle is needed.

- 1 Link EMX-830 to a PC.

- 2 Activate Lyrics Management as described in the picture above.



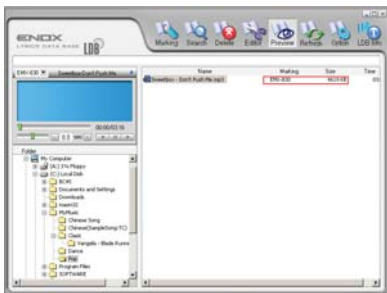
- 3 Select a file and choose Marking from the top menu bar.

- 4** After the successful lyric insertion, click “OK” to complete the operation

Tip : \_\_\_\_\_

- You can insert lyrics to multiple files by this operation.

- 5** After the successful lyric insertion, ‘EMX-830’ is displayed on the panel.

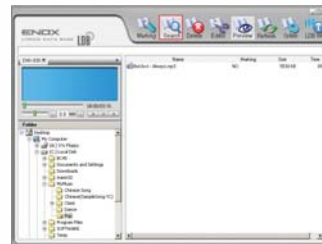


Tip : \_\_\_\_\_

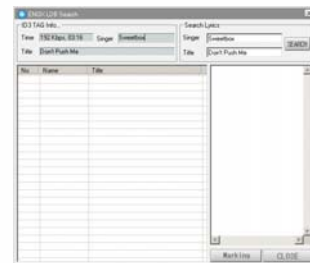
- Lyrics Management supports lyrics search for MP3 and WMA.

## ■ To search for the downloadable lyrics.

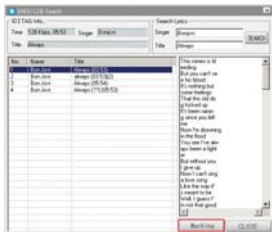
- 1** When corresponding lyrics don't appear, refer to the download guide as described below.



- 2** In case of no automatic search result, select the file and choose Search.



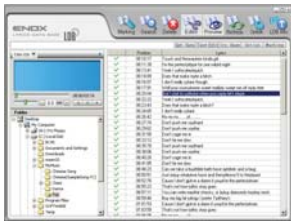
- Enter the artist's name and son's title in the Search window, and click on the Search button.



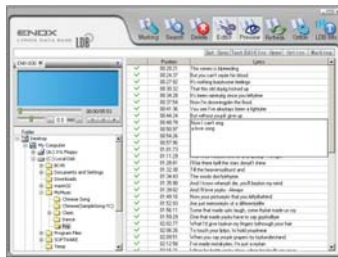
- Look for the closest match with time information, artist and song's title. Click Marking for the match and insertion.

## Lyric Editor

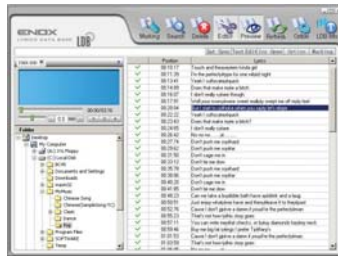
- Use the editing tool when you want to enter lyrics manually, or for the match where the result requires further editing.



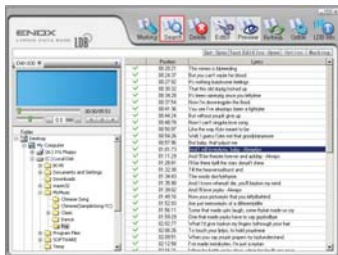
- Select a file and choose Editor from the top menu bar.
- Select a line from the lyrics window and edit the text. Click Marking after editing is complete



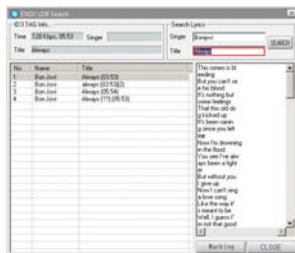
- Enter the whole lyric for the file with no match result and click on Set Sync to each text line for the time stamp. After completing the editing, click Marking.



**5** Choose Search and the result will show on the right.



**6** Look for the closest match and click Marking to save in the product.



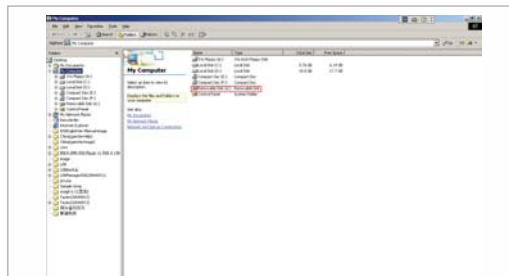
**7** Click on “Choose a File” to select the text edited in “Noontang Lyrics Editor.” Click Marking to add to the track.

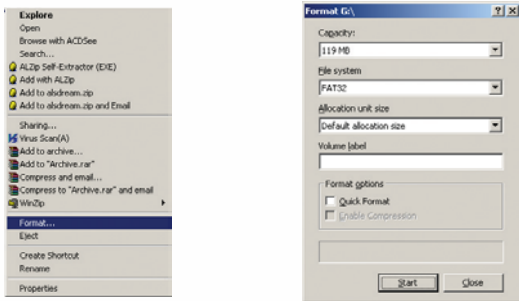
**Tip :** \_\_\_\_\_

- Lyrics Management is the registered trademark of Taylor Technology.
- To edit lyrics, use the lyrics editor available by [www.noontang.com](http://www.noontang.com).
- Add the edited texts using “Noontang Lyrics Editor” to Lyrics Management which will produce an appropriate lyric.

### ■ To format EMX-830

To delete all the contents in EMX-830, refer to the following guide.





1 Click on “Start” to begin formatting.

Tip :

- Please be sure not to use the NTFS format, which may result in malfunction of the product.
- In Windows 98SE, no particular setting is necessary to format the product.

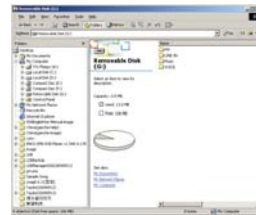
## Using EMX-830

### ■ Preparations

To optimize the performance of the product, following precautions should be considered.

1. Data other than music files should be kept in the Data folder.

- ▶ When EMX-830 is powered on, every folder other than Data are searched for file information. Therefore, larger the number of files Search is carried out for, slower the booting will be.



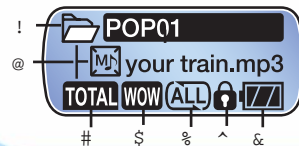
2. Place a numerical prefix to the file name in the order of playback is preferred.

- ▶ Place numerical prefixes to music files in the order of playback, and managing the lyrics would be easier.

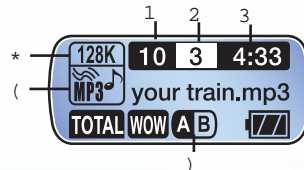
3. To format EMX-830, use only the program included in the Installation CD. EMX-830 functions will not work properly if other format software including Windows Explorer is used.

### ■ LCD Window

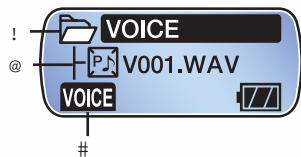
MUSIC PAUSE



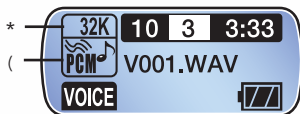
MUSIC PLAYBACK



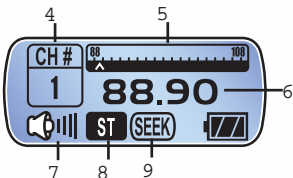
VOICE PAUSE



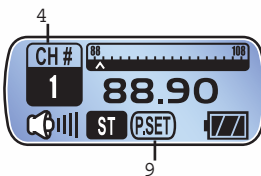
VOICE PLAYBACK



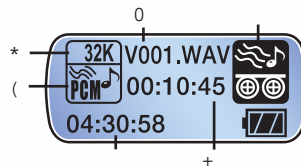
FM SEEK



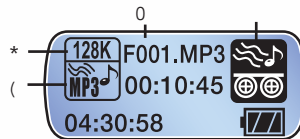
FM PRESET



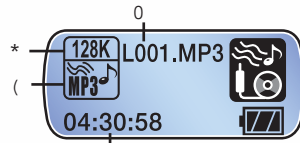
VOICE RECORDING



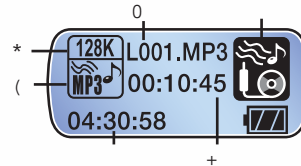
FM RECORDING



Line-In RECORD READY



Line-In RECORDING



No	Description	No	Description
1	Folder	2	File Display
3	Mode/Playback Options	4	EQ/SRSWOW
5	Repeat Options	6	Hold
7	Battery Level	8	Bit Rate
9	Mp3./WMA/WAV	10	Repeat Section
11	Number of Music Files	12	Selected File
13	Elapsed Playback Time	14	Selected Station
15	Channel Gauge	16	Frequency of Selected Station
17	Volume Level	18	MONO/STEREO
19	SEEK/PRESET	20	Recorded File Number
21	FM/MIC/Line-In RECORD	22	Remaining Recording Time
23	Elapsed Recording Time		



## ■ Button Operation

In EMX-830, there are PAUSE, PLAYBACK, RECORD and FM modes. For each mode, the following table explains how to operate the buttons.

### ▷ Music Pause

Voice	Playback	Brief Press	Hold Down
PLAYBACK		To play	To power off
CENTER JOG		To open/close folders	Menu Options
RIGHT JOG		Next File (Where applicable)	
LEFT JOG		Previous File (Where applicable)	
UP JOG		Previous File (Where applicable)	
DOWN JOG		Next File (Where applicable)	
MODE BUTTON		Option for 2 or 3 Line LCDWindow	Mode
RECORD		To mark a folder/file	

### ▷ Music Playback

Voice	Playback	Brief Press	Hold Down
PLAYBACK		To pause	To power off
CENTER JOG		Menu Options	
RIGHT JOG		Next File	Speed Search
LEFT JOG		Previous File	Speed Search
UPPER JOG		To increase volume	
LOWER JOG		To decrease volume	
MODE BUTTON		To set/release Repeat Section	Mode
RECORD		EQ / SRS	

### ▷ Voice Pause

Voice	Playback	Brief Press	Hold Down
PLAYBACK		To play	To power off
CENTER JOG		To open/close folders	Menu Options
RIGHT JOG		Next File (Where applicable)	
LEFT JOG		Previous File (Where applicable)	
UP JOG		Previous File (Where applicable)	
DOWN JOG		Next File (Where applicable)	
MODE BUTTON		Option for 2 or 3 Line LCD	Mode
RECORD		To mark a folder/file	

### ▷ Voice Playback

Voice	Playback	Brief Press	Hold Down
PLAYBACK		To pause	To power off
CENTER JOG		Menu Options	
RIGHT JOG		Next File	Speed Search
LEFT JOG		Previous File	Speed Search
UP JOG		To increase volume	
DOWN JOG		To decrease volume	
MODE BUTTON		To set/release Repeat Section	Mode
RECORD		N/A	To start/stop recording

▷ **FM Seek Mode (“Seek” is displayed on the LCD window)**

Voice	Playback	Brief Press	Hold Down
PLAYBACK		Preset Mode	To power off
CENTER JOG		Next Preset	Menu Options
RIGHT JOG		To change frequency	To seek next available frequency
LEFT JOG		To change frequency	To seek next available frequency
UPPER JOG		To increase volume	
LOWER JOG		To decrease volume	
MODE BUTTON		To save on the preset	Mode
RECORD		N/A	To start/stop recording

▷ **FM Preset (“P-set” is displayed on the LCD window)**

Voice	Playback	Brief Press	Hold Down
PLAYBACK		Seek Mode	To power off
CENTER JOG		N/A	Menu Options
RIGHT JOG		To move up on the preset channel	
LEFT JOG		To move down on the preset channel	
UP JOG		To increase volume	
DOWN JOG		To decrease volume	
MODE BUTTON		Automatic scanning	Mode
RECORD		N/A	To start/stop recording

▷ **Line-In MODE**

Voice	Playback	Brief Press	Hold Down
PLAYBACK		N/A	To power off
CENTER JOG		Menu Options	
RIGHT JOG		N/A	
LEFT JOG			
UPPER JOG		To increase volume	
LOWER JOG		To decrease volume	
MODE BUTTON		N/A	Mode
RECORD		N/A	To start/stop recording

■ **Basic Operation**



▷ **To turn on the power.**

– Press on the playback button.



Good Bye~

▷ **To turn off the power**

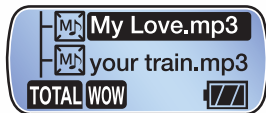
- Hold down on the Playback button 3 seconds or longer.



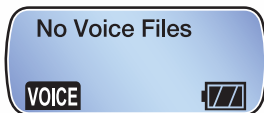
▷ **Mode Change (Music/Voice/FM/Line-In)**

- 1 Hold down on the MODE button.
- 2 In Mode options, use the left/right jog to move to your choice of mode and press on the Menu/Mode button to select.

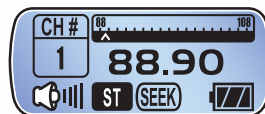
Music Mode



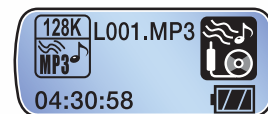
Voice Mode



FM Mode




Line-In Mode



▷ **To adjust volume**

- Press on the Up/Down button.

▷ **Hold Function**

- To prevent users from mistakenly pressing buttons.
- When Hold is set,  icon is displayed and no buttons will work.

■ **To play music**

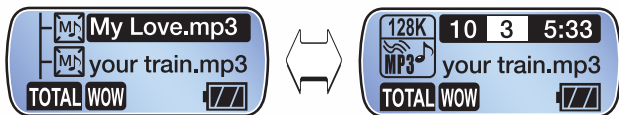
▷ **Navigating folders.**

- In Search mode, use the volume button to navigate folders.

Tip : \_\_\_\_\_

- When there's no folders to navigate, the same control will move up and down on the existing files.

- 1 To play/pause – press on the Playback button of EMX-830.



- 2 To open/close a folder – Press on the JOG button after a folder is selected.



- 3 To select either two or three line display



- 4 Press on the Mode button briefly to make the changes.

### ▷ To navigate within the playing track

- Move and hold the left/right jog to navigate within the track.
- The search speed will increase when the hold on the jog control maintained.

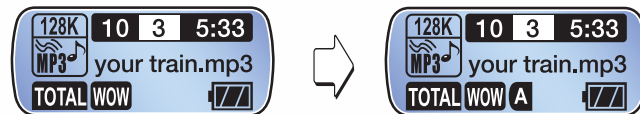
### ▷ To change the playing tracks

- Press briefly on the left/right jog and the following occurs.

	Control Point	Function
Left Jog	Within 5 sec. of playing	To play the previous file
	Over 5 sec. of playing	To play the currently selected file
Right Jog	Always	To play the next file

### ▷ Repeat Section

- Press on the Mode button of EMX-830. ( **A** )
- Press on the Mode button of EMX-830. ( **AB** )
- Press again on the Mode button to release the Repeat Section.





Tip : \_\_\_\_\_

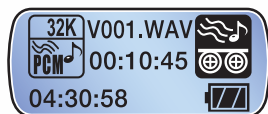
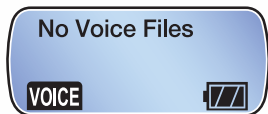
\* Repeat Section requires 3 seconds or more of a loop to repeat.

### ■ To change to VOICE Mode



**1** Press and hold down on the Mode button until the Mode window appears.

**2** Select VOICE.



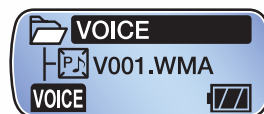
**3** In VOICE mode, press and hold down on the Record button.

Tip : \_\_\_\_\_

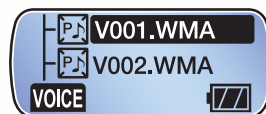
\* To finish recording, press on the Record button again.

### ▷ To play a recorded file in Voice mode.

**1** In VOICE mode, press on the Repeat Section button to open the folder.



**2** Select the file to play and press on the Playback button.



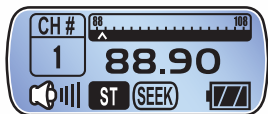
Tip : \_\_\_\_\_

● In VOICE mode, SRS function and Playback methods are not available.

## ■ To change to FM Mode



To tune in to a station, press on the Mode button and select FM.



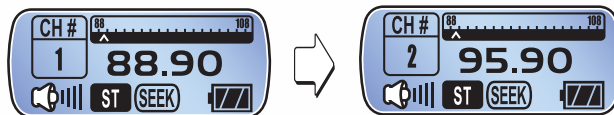
In SEEK mode, **SEEK** icon appears on the bottom of the LCD

### ▷ Band Scanning

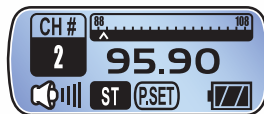
- Press Left/Right Jog briefly to navigate the band on a preset increment of 100Hz.
- Hold down and release the Left/Right button, and the next available channel appear.

\* Reception in the area will determine MONO/STEREO automatically.

### ▷ To save the band frequency



- Press briefly on the Central Jog to move up or down on the preset channels.

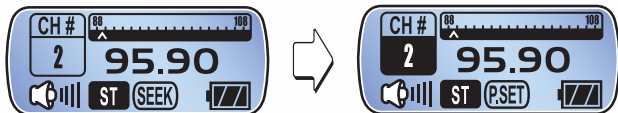


- Select the frequency to be saved, and press briefly on the Mode button.

\* When the channel store is complete, P-SET mode is automatically selected.

### ▷ To change to P-SET

- In SEEK mode, press on the Playback button to change to P-SET Mode.



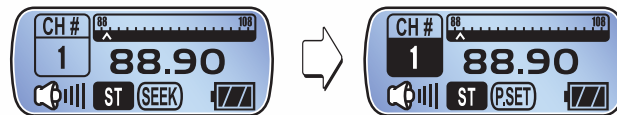
- \* In P-SET mode, you can tune in to one of the preset bands.

### ▷ To move between the preset channels.

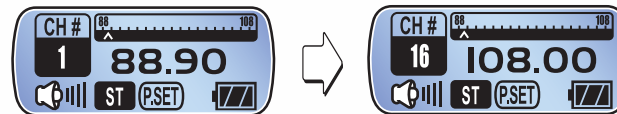
- Press on the Left/Right button to move between the channels.

### ▷ Auto Scan

- Auto Scan will allow the user to save up to 16 stations.



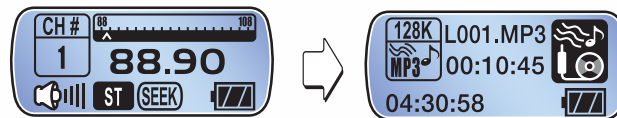
- Change to P-SET(icon will be displayed) mode.



- Press on the Mode button and 16 stations that would be scanned will be saved.

- \* Be sure to have the earphone connected to the set.

### ▷ To record FM stations



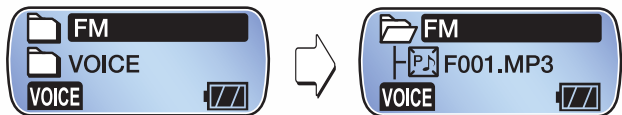
- In FM mode, hold down on the Record button.

\* Input volume cannot be adjusted while recording is in progress.

▷ To play a recorded file



– Hold down on the Mode button to change to VOICE.

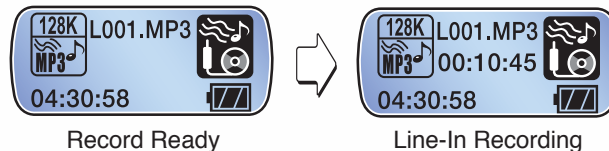


– Select a file that has been previously saved in the FM folder.

■ To change to Line-In Mode



1 Hold on the Mode button to change to Line-In.



- 2 In Line-In mode, hold down on the Record button.
- 3 Files are saved in the Line-In folder of MUSIC.

■ To configure Menu



- 1 Press on the Menu button.
- 2 Move between the menus to select.
- 3 To move up on a directory, press and hold down on the Menu button or choose EXIT.

Tip : \_\_\_\_\_

- In Menu mode, doing nothing longer than 7 seconds will exit the menu mode.



- MUSIC/VOICE/FM/Line-In modes have different sets of sub-menus.

### ▷ Summary of Menu functions

Menu	Function
Playing Methods	To play music files programmed into a play list
Equalizer	To configure the equalizer settings
SRS Labs WOW	SRS WOW Configuration
Repeat	To set Repeat Section options
Brightness	To adjust the brightness of LCD
Light Time	To adjust the duration Backlight is remained on
Backlight Color	To select light source of backlight
Record	To adjust Audio Quality/Sensitivity/ASD
Scroll Speed	To adjust the scroll speed of LCD
Power Save	To set the time when to activate Power Save
Sleep	To set the time when to activate Sleep Mode
File Delete	To delete a file (to be used in Pause mode)
Lyrics Options	Whether to display lyrics
Track Information	Whether to display ID3 tag and Meta data
Language Selection	To select the language of menu and messages
Registration	Product Inforamtion
Exit	To exit menu

### ▷ To choose from Play settings



– To play from the play list.

Methods	Description	Window
	To play all tracks contained in EMX-830.	
	To play all marked folder.	
	To play all marked files	

\* The number inside the box indicates the number of files to be played.

Note : \_\_\_\_\_

- When there is no file to play for the M-Fold or M-File, “No Marked Files/Folder” message is displayed.
- When the marked file or folder is erased or more files are added, bookmark will be released.

#### ▷ To set Bookmark for files and folders

- To bookmark a file or a folder, press on the Record button after selecting the file or the folder.



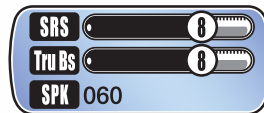
Bookmark released



Bookmark activated

#### ▷ WOW SRS Setting (WOW SRS is selected)

- When SRS, Tru Bas, or WOW is displayed on the LCD window of EMX-830 Series, main menu will appear.



- Make the appropriate settings by adjusting SRS, Tru Bas, and SPK slides.

- **SRS** – To create 3D sound effects.
- **Tru Bas**– To enhance the bass for thrilling sound experience.
- **WOW** – To produce SRS and Tru Bas effects at the same time for outstanding audio fidelity.
- **SPK** – To adjust the sound effects for the speakers used.

Values for audio output device	
40	Small earphone
60	Standard earphone
100	Small speaker
Over 100	Speaker

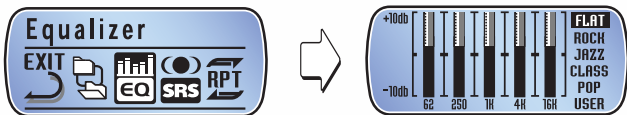
Tip : \_\_\_\_\_

- SRS is the trade mark of SRS Labs. Inc.
- WOW technology is licensed by SRS Labs. Inc.
- When SRS is activated, EQ doesn't work and the adjustment for the setting can't be made.

- To make SRS settings, SRS should be selected in Music mode.

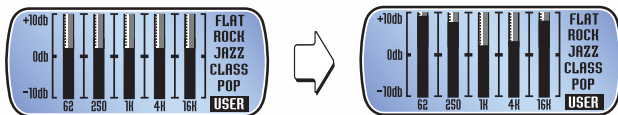
#### ▷ EQ settings (WOW SRS is not activated)

- To customize the tone settings by the user.



#### ▷ User EQ settings

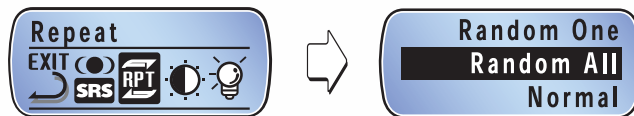
- User EQ can be customized and output of a frequency bandwidth can also be adjusted for the appropriate tone settings.
- User EQ of EMX-830 includes 5 frequency bands, and each band can be adjusted between +10dB ~ -10dB.



- Use the menu and the left/right button to make the adjustment.

#### ▷ Repeat Section

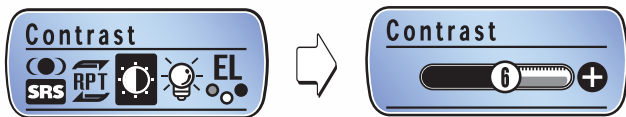
- Repeat Section includes Single File Repeat/Repeat All/Random Playback/Random Repeat All/Repeat Off.



	Description
Single Track Repeat	To repeat the current selected file
Repeat All	To make a sequential repeat
Random Playback	To make one random playback of all tracks
Random Repeat All	To make a random repeat of all track
Repeat Off	To make one sequential repeat of all tracks

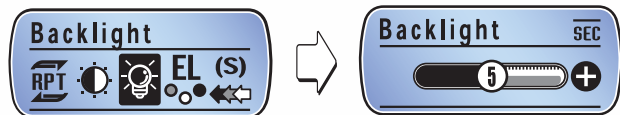
### ▷ LCD Contrast

– To adjust LCD contrast.



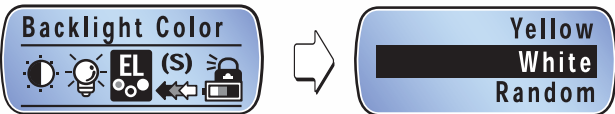
### ▷ Light Time

– The duration that the backlight is remained turned on can be adjusted.



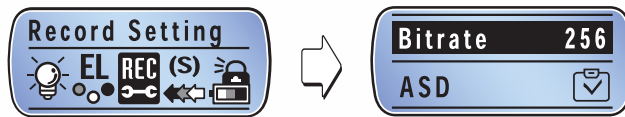
### ▷ To select the source of backlight.

– Select the color of light source. Seven colors are available.



### ▷ Record Settings

– To select the recording quality.

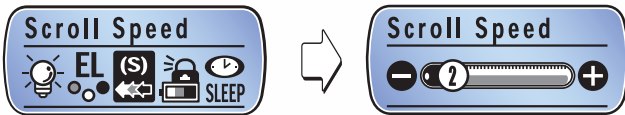


Tip :

- The ASD setting applies to Line-In.

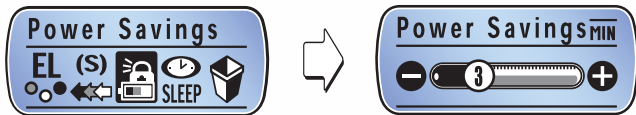
### ▷ Scroll Speed

– Scroll speed sets the speed of text scrolled on the LCD window.



### ▷ Power Save

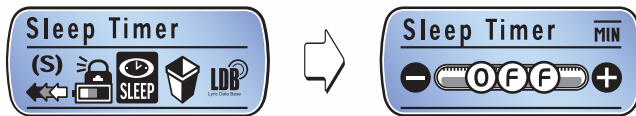
– Power Save is to turn the power off when no input is made.



\* Power is automatically turned off when there's no playback for a certain time period.

#### ▷ Sleep

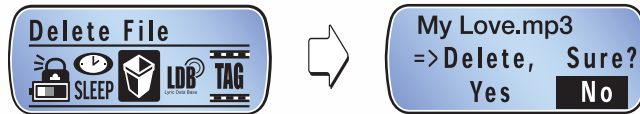
– Sleep will turn off the power when the user-set period elapses. Use this when you are going to listen to radio or music for an extended period of time.



\* The power goes off after a certain pre-determined period has passed.

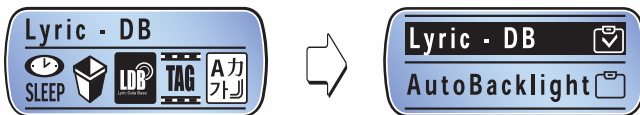
#### ▷ To delete a file

– Choose a file and press on the Menu button to delete the file.



#### ▷ Lyrics Settings

- Use Lyrics Settings if you want to display the lyric that accompanies a music file.
- Automatic Backlight is to turn on the backlight for the time when lyrics should be displayed.

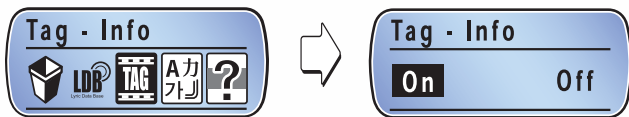


#### Tip :

- Having the backlight turned on will reduce the playing time because it will increase the unit's power consumption.

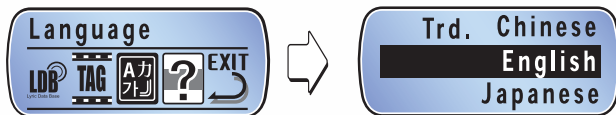
#### ▷ Track Information

- Setting Track Information will display the information (including artist and the song title) for the MP3/WMA files.



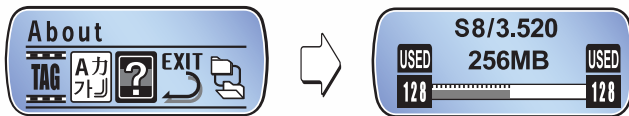
### ▷ Language Setting

– To display the language of Menu and messages.



### ▷ Registration Information

– Registration Information will display the product's model name, firmware ver.



### ▷ Exit

– To exit the menu, choose the EXIT icon or hold down on the Menu button.



## Firmware Upgrade

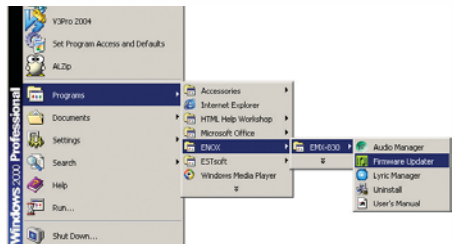
Choose Firmware Upgrade when there's a new firmware upgrade released or EMX-830 doesn't work properly.

Notice : \_\_\_\_\_

- Disconnecting EMX-830 from a PC may result in a damage to the set.

\* Check our website for the new release of Firmware Upgrade.

- 1** Link the product to a PC using the provided USB cable.

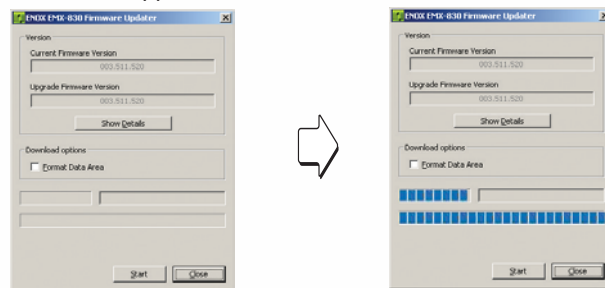


- 2** Choose [Start] → [Programs] → [MSC ] → [EMX-830 ] → [Firmware Update]



- 3** For the users of Windows XP, choose “Automatic Software Installation” and click on the Next button.

- 4** When the driver installation is complete, the following window will appear.



- 5** When the upgrade is complete, disconnect the set from the PC. Refer to the “EMX-830 Safe Unplug/eject.”

**Notice :** \_\_\_\_\_

- Do not disconnect the product from the PC while upgrade is in progress.
- Save all the data on the product before initiating the firmware upgrade.
- To check the Firmware information, choose Registration Information on the menu. Also the information is displayed during the boot process.

## Product Specification

Model	EMX-830 Series
Memory	128MB/256MB/512MB/1024MB
File Support	MPEG 1/2/2.5 Layer 3(8~ 320kbps, VBR) WMA (5~192kbps) support
Battery	One AAA (1.5V)
USB	USB2.0
Playing Time	About 20 hours
LCD	Graphic LCD (3Line) / EL Backlight
Size	22 x 53 x 22mm
Weight	22.4g
S/N Ratio	90dB
Earphone Output	10mW + 10mW (16Ω)
FM Frequency	87.5~108MHz
Recording	VOICE / FM /Line-In Recording
Language	Multiple language support (Unicode 2.0 Standard)
OS	Windows 98SE / ME / 2000 / XP / MAC

\* Installation software for Mac users is not provided.

## Troubleshooting Checklist

- **Power cannot be turned on.**
  - Check if the battery is properly aligned to the correct polarity.
- **In case of no sound**
  - Check if the volume is set to '0.'
  - Check if the connection of the earphone has failed.
- **Buttons don't work**
  - Check if the Hold switch is on.
- **In case of “No Marked Files” or “No Marked Folder”**
  - Choose the “Total” mode of [Playing Methods]
  - For more details, refer to the Playing Methods of this guide.
- **In case of no FM reception**
  - For a fringe area where reception is poor, some radio signals are hard to pick up.
  - Check if the connection of the earphone has failed. (The earphone doubles as the antenna for the product.)
- **The system seems sluggish**
  - Booting speed will be slow when there are too many files in EMX-830 Series.
  - Refer to the page 30, “Preparations.”



## Cautions

1. Refrain from using the earphone when you are biking or driving or walking (especially when crossing the street). Not doing so can result in a car accident.
2. Listening for too long at a loud volume can cause serious hearing problems.
3. Using a headphone/earphone while you are on the street can result in a car accident.
4. Do not drop or impact the unit. It may cause malfunctions.
5. Exposure to water or high humidity can cause malfunctions.  
When this happens, do not turn on the power.  
Remove the battery as soon as possible and request for a service repair.
6. Exposure to direct sunlight, heat source for too long can cause malfunctions.
7. Keep the battery separately from the unit when not in use for a long time.  
Leakage from the battery may damage the product.

## Warranty

Product	VOICE RECORDER & MP3 PLAYER		Model	EMX-830		
Assurance period	1 YEAR		Item	Sales date	yy	mm dd
Customer	Address Name	tel signature				
Sales agency	Address Agency name	tel signature				

### FCC note:

This equipment has been tested and found to comply with the limits for a Class B digital device, pursuant to part 15 of the FCC Rules. □

These limits are designed to provide reasonable protection against harmful interference in a residential installation. □

This equipment generates, uses and can radiate radio frequency energy and, if not installed and used in accordance with the instructions, may cause harmful interference to radio communications. □

However, there is no guarantee that interference will not occur in a particular installation. □

If this equipment does cause harmful interference to radio or television reception, which can be determined by turning the equipment off and on, the user is encouraged to try to correct the interference by one or more of the following measures: □

- Reorient or relocate the receiving antenna. □
- Increase the separation between the equipment and receiver □
- Connect the equipment into an outlet on a circuit different from that to which the receiver is connected. □
- Consult the dealer or an experienced radio/TV technician for help.

**CAUTION:** Changes or modifications not expressly approved by the □ manufacturer responsible for compliance could void the □ user's authority to operate the equipment. □

□

MEMO

MEMO